

Name Jack

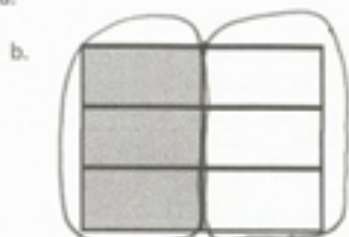
Date _____

Each rectangle represents one whole.

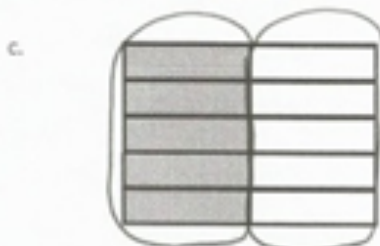
1. Compose the shaded fractions into larger fractional units. Express the equivalent fractions in a number sentence using division. The first one has been done for you.



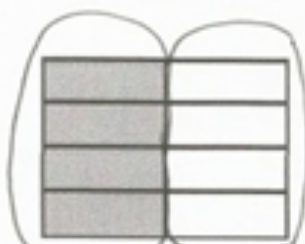
$$\frac{2}{4} = \frac{2 \div 2}{4 \div 2} = \frac{1}{2}$$



$$\frac{3}{6} = \frac{3 \div 3}{6 \div 3} = \frac{1}{2}$$

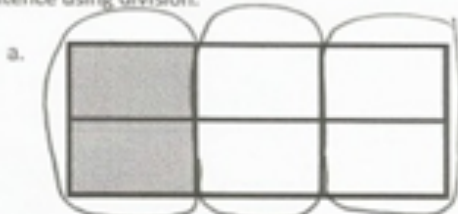


$$\frac{5}{10} = \frac{5 \div 5}{10 \div 5} = \frac{1}{2}$$



$$\frac{4}{8} = \frac{4 \div 4}{8 \div 4} = \frac{1}{2}$$

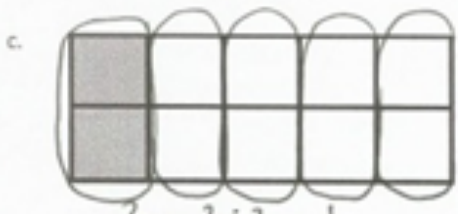
2. Compose the shaded fractions into larger fractional units. Express the equivalent fractions in a number sentence using division.



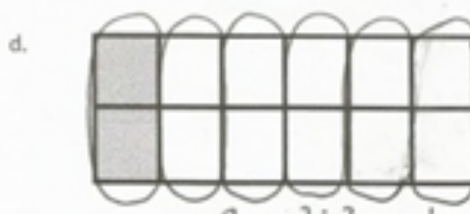
$$\frac{2}{6} = \frac{2 \div 2}{6 \div 2} = \frac{1}{3}$$



$$\frac{2}{8} = \frac{2 \div 2}{8 \div 2} = \frac{1}{4}$$



$$\frac{2}{10} = \frac{2 \div 2}{10 \div 2} = \frac{1}{5}$$



$$\frac{2}{12} = \frac{2 \div 2}{12 \div 2} = \frac{1}{6}$$

- e. What happened to the size of the fractional units when you composed the fraction?

When I composed the fractions, the size of the fractional units became larger.

- f. What happened to the total number of units in the whole when you composed the fraction?

There were fewer total units in the whole when I composed the fraction.

3.

- a. In the first area model, show 2 sixths. In the second area model, show 3 ninths. Show how both fractions can be renamed as the same unit fraction.

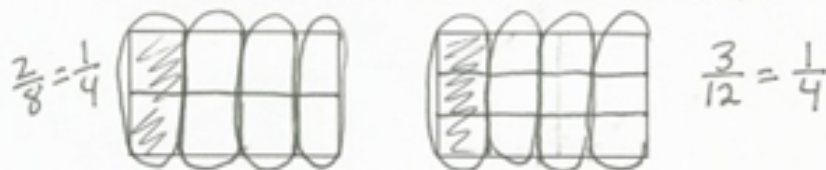


- b. Express the equivalent fractions in a number sentence using division.

$$\frac{2}{6} = \frac{2 \div 2}{6 \div 2} = \frac{1}{3} \qquad \frac{3}{9} = \frac{3 \div 3}{9 \div 3} = \frac{1}{3}$$

4.

- a. In the first area model below, show 2 eighths. In the second area model, show 3 twelfths. Show how both fractions can be composed, or renamed, as the same unit fraction.



- b. Express the equivalent fractions in a number sentence using division.

$$\frac{2}{8} = \frac{2 \div 2}{8 \div 2} = \frac{1}{4} \qquad \frac{3}{12} = \frac{3 \div 3}{12 \div 3} = \frac{1}{4}$$