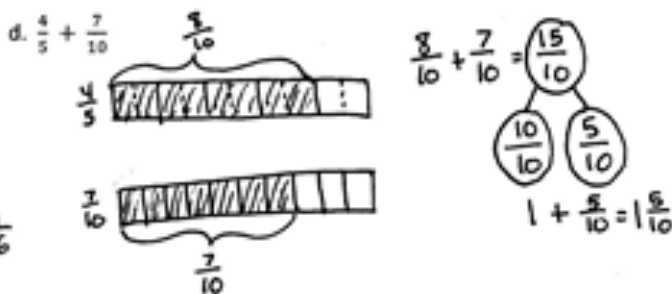
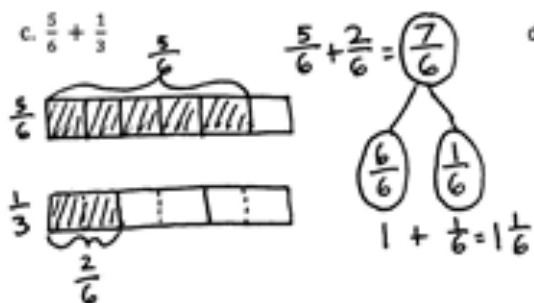
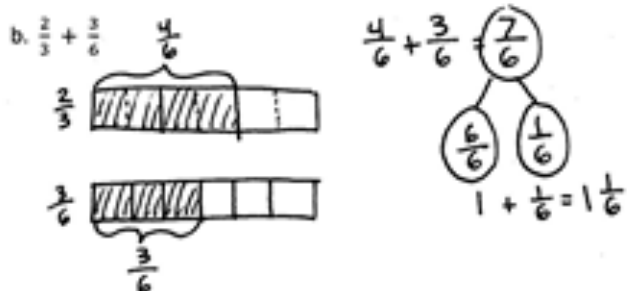
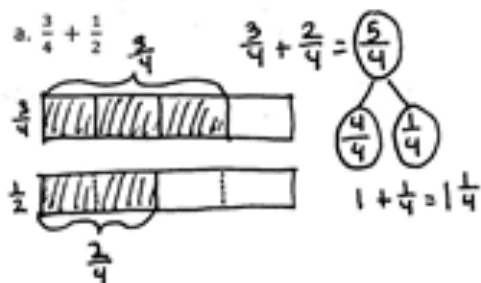
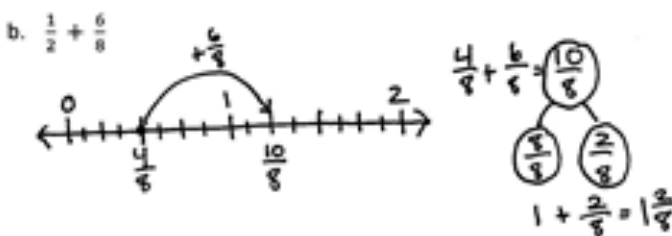
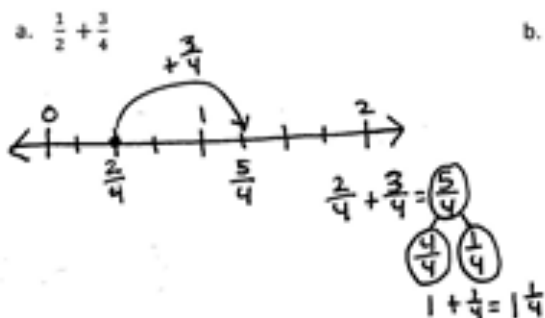


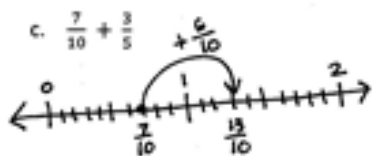
Name Jack Date _____

1. Draw a tape diagram to represent each addend. Decompose one of the tape diagrams to make like units. Then write a complete number sentence. Use a number bond to write each sum as a mixed number.



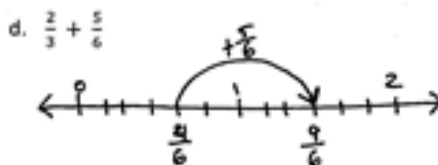
2. Draw a number line to model the addition. Then write a complete number sentence. Use a number bond to write each sum as a mixed number.





$$\frac{7}{10} + \frac{6}{10} = \frac{13}{10}$$

$$1 + \frac{3}{10} = 1\frac{3}{10}$$



$$\frac{4}{6} + \frac{5}{6} = \frac{9}{6}$$

$$1 + \frac{3}{6} = 1\frac{3}{6}$$

3. Solve. Write the sum as a mixed number. Draw a model if needed.

a. $\frac{3}{4} + \frac{2}{8} = \frac{6}{8} + \frac{2}{8} = \frac{8}{8} = 1$

b. $\frac{4}{6} + \frac{1}{2} = \frac{4}{6} + \frac{3}{6} = \frac{7}{6} = 1\frac{1}{6}$

$$\frac{6}{6} \quad \frac{1}{6}$$

c. $\frac{4}{6} + \frac{2}{3} = \frac{4}{6} + \frac{4}{6} = \frac{8}{6} = 1\frac{2}{6}$

$$\frac{6}{6} \quad \frac{2}{6}$$

d. $\frac{8}{10} + \frac{3}{5} = \frac{8}{10} + \frac{6}{10} = \frac{14}{10} = 1\frac{4}{10}$

$$\frac{10}{10} \quad \frac{4}{10}$$

e. $\frac{5}{8} + \frac{3}{4} = \frac{5}{8} + \frac{6}{8} = \frac{11}{8} = 1\frac{3}{8}$

$$\frac{8}{8} \quad \frac{3}{8}$$

f. $\frac{5}{8} + \frac{2}{4} = \frac{5}{8} + \frac{4}{8} = \frac{9}{8} = 1\frac{1}{8}$

$$\frac{8}{8} \quad \frac{1}{8}$$

g. $\frac{1}{2} + \frac{5}{8} = \frac{4}{8} + \frac{5}{8} = \frac{9}{8} = 1\frac{1}{8}$

$$\frac{8}{8} \quad \frac{1}{8}$$

h. $\frac{3}{10} + \frac{4}{5} = \frac{3}{10} + \frac{8}{10} = \frac{11}{10} = 1\frac{1}{10}$

$$\frac{10}{10} \quad \frac{1}{10}$$